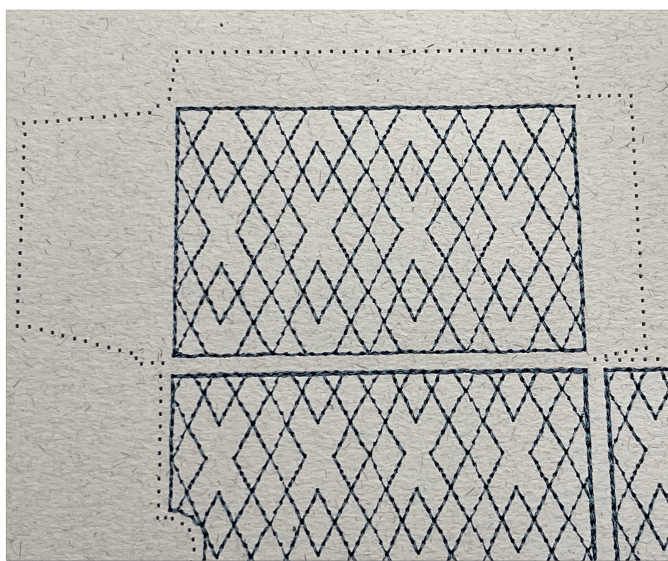
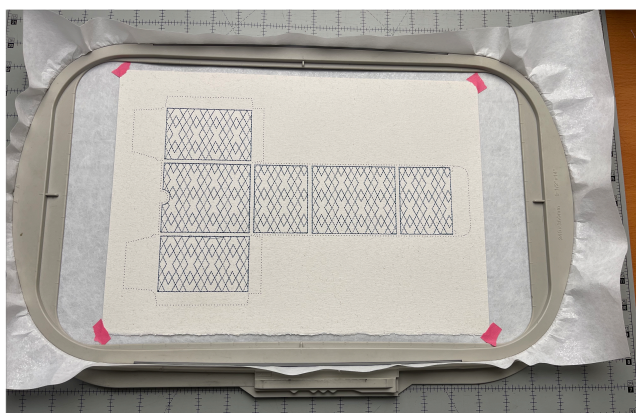


How to Make a Paper and Cork Gift Box

Digitized by Trevor Conquergood
Make this quick sew in the hoop gift box for your special someone. You need Floriani Cutaway Medium Fusible, Water Color Paper, RNK Press 2 Bond and RNK Cork Fabric.

Hoop one layer of Floriani Cutaway Medium Fusible stabilizer with the shiny glue side up. Place a piece of water color paper on top and use some RNK Embroidery Perfection tape in the corners to hold the paper in the center of the hoop. Stitch the “Gift Box” design on the paper in any colour you like.

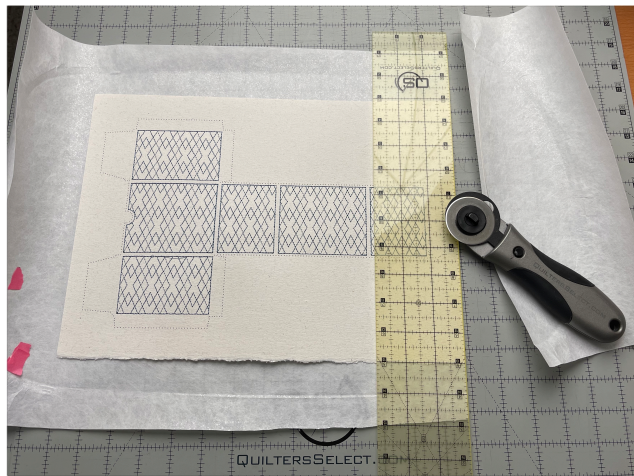
The second color of the design makes the box pattern you will cut out. You can take the thread out of the needle and simply stitch holes in the paper. Look in your machine settings for the ability to “turn off the thread sensor” to be able to sew without thread and not have the machine stop to tell you there is no thread in the needle.



Sunset Stitches

Embroidery How To with Trevor Conquergood

Once you are finished sewing the design you will need to trim the stabilizer from around the paper. The next step is to apply heat (Iron or Press) to fuse the stabilizer to the paper so be sure to trim well so you don't get any adhesive on the iron. Its always a good idea to use a pressing cloth to protect your iron when using adhesives.



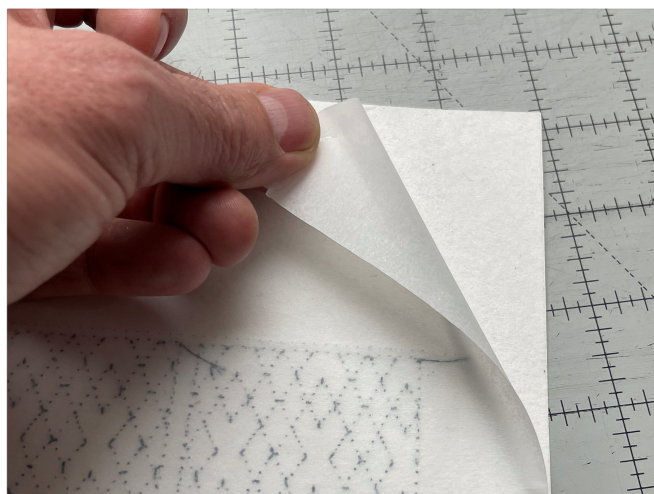
Use a Hot Iron or Heat Press set to cotton to fuse the stabilizer to the paper. It's important you hooped the stabilizer shiny or glue side up so it should be facing the paper. If you hooped it shiny side down you will not be able to fuse the stabilizer and so you can not add the cork liner. You can however still make the box without a liner so not all is lost. If you did get the stabilizer shiny side up you can now press the paper and stabilizer together. Use about 10 seconds of time with a hot iron and light pressure. If you are using a hand iron you will need to press several places to cover the entire paper. Be careful with a hand iron not to press too hard or you may dent or mark the paper. You can press from either side and its fine to press it from both sides. You want the paper to cool and be permanently fused to the paper



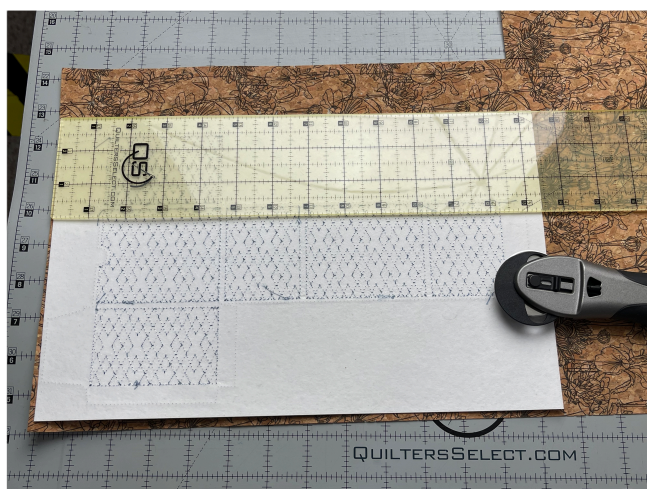
Sunset Stitches

Embroidery How To with Trevor Conquergood

The next step is to add the adhesive to the back of the paper where the cutaway stabilizer is fused on. Use RNK Press 2 Bond as the adhesive that will fuse to the paper and then be used to fuse the cork to the back. When you are done you will have paper on one side and cork on the other. Be sure to carefully trim the adhesive to match the size of the paper so you don't get any glue on your iron. Use a pressing cloth to help protect your iron from getting any glue on your iron. Use a medium/hot (wool/cotton) temp with the Press 2 Bond. Once you have fused the Press 2 Bond to the back of the paper let it cool for a minute before you peel off the waxy paper and leave the adhesive on the back of the paper.



When you peel off the waxy transfer paper from the back of the water color paper you will see there is a shiny adhesive left on the back of the paper. The next step is to trim some RNK Cork Fabric to match the size of the paper. Once again be sure to make them the same size so you don't get adhesive glue on your iron and remember to use a pressing cloth. Use a medium/hot (wool/cotton) temp for the iron and hold for about 10 seconds with light pressure. It's fine to press it more than once to be sure you get a good bond.



Sunset Stitches

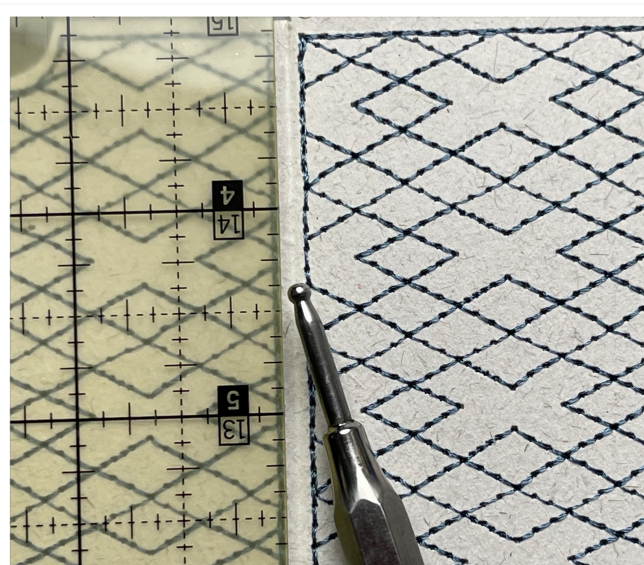
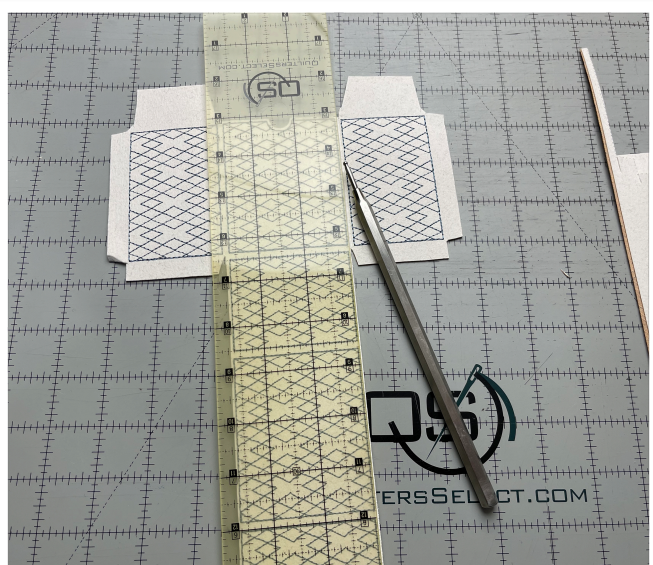
Embroidery How To with Trevor Conquergood



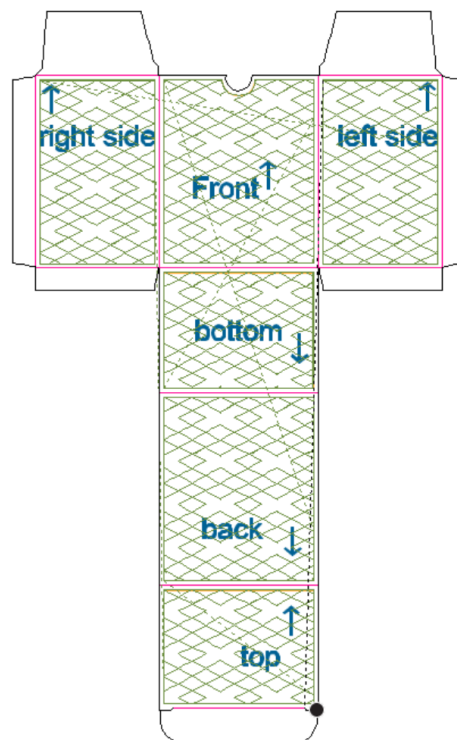
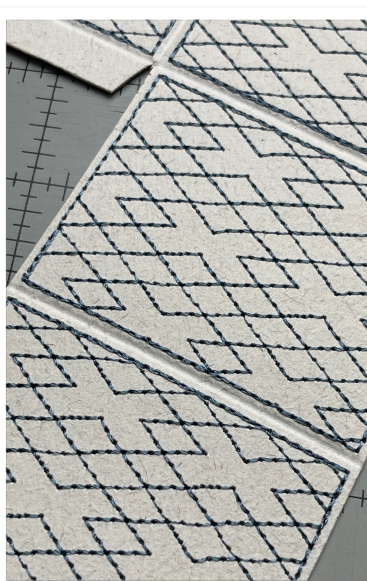
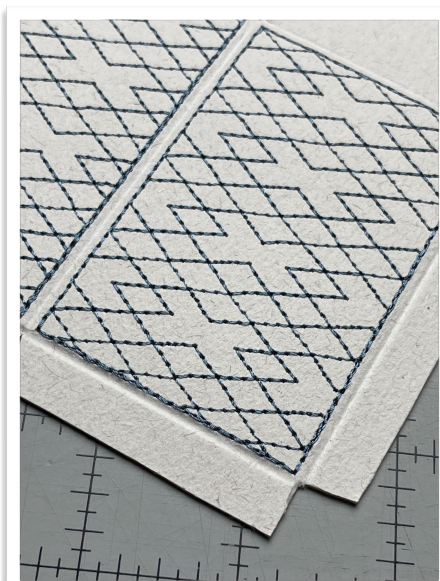
The next step is to cut the box out. You will need to use scissors to cut the box out and we suggest the Quilt Select Applique Wave Scissor because it is a nice size and has a nice point. Be sure to trim along the dotted line we stitched into the paper. The perfect cut will be just inside of the dots so you'r finished edge of the paper is smooth.



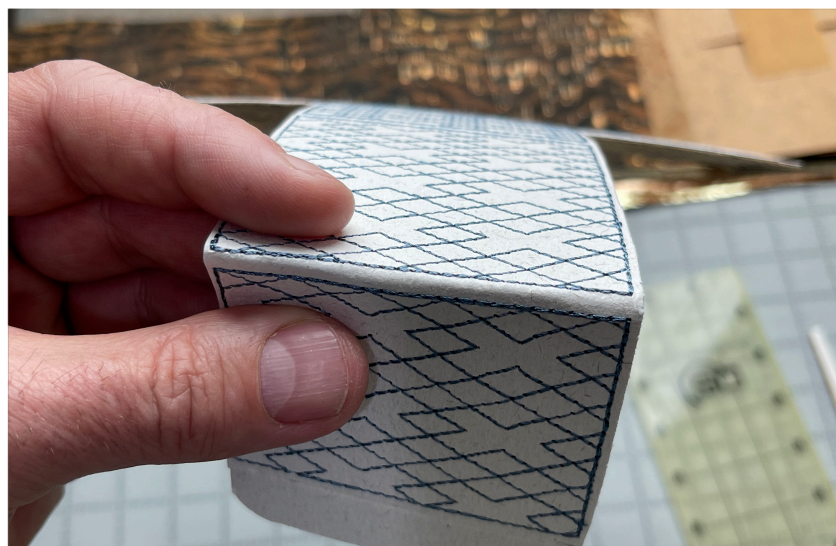
The next step is to prepare the box to be folded. To help the edges fold we use the RNK Precision Turning Tool to make a groove where the fold will happen. This step will help the paper to fold in the correct place. The goal is to fold in between the edges of the stitching and if you don't crease the line first the paper will like to fold along the stitching edge. Use a ruler and make the crease on the top of the paper where you can easily see where the crease line will go.



Crease along all of the fold lines. Make sure you don't forget to crease the edges of the tabs on the side where the box will glue together. The fold lines are the pink lines in the image to the right.



The next step is to actually fold all of the edges you creased. Take some time and gently make the edges and try to help the paper fold along the crease by pinching with your fingers on either side of the fold. Fold each edge one by one until all of the edges have been folded. It should look like the photo on the right and now you are ready to glue the box together.



Sunset Stitches

Embroidery How To with Trevor Conquergood

The best adhesive is a double sided tape like Aileens Fabric Fusion Tape. You can use fabric glue or hot glue but it is easy to use to much and the extra glue will show in your finished box. The double sided tape comes in sheets or a roll but either way we need to trim it to match the size of the folded tabs. Peel off one side of the tape and stick along the inside edge as show in the photo below left. Use RNK precision angle tweezers to lift the second side of the tape and carefully assemble the folded tabs onto the tape. We suggest you do one side complete and then take the tape off and stick the second side.



Glue one side complete then do the other to avoid getting in a sticky situation. Enjoy the Box. The Box can be the gift or hold an extra special gift.

